

# SCHOOL & TEACHER PROGRAMS

2021-2022



**Country Music  
Hall of Fame® and Museum**

*Virtual Opportunities Available*



# ► Country Music Hall of Fame and Museum

School and teacher programs provide dynamic, interdisciplinary experiences that support curriculum standards in core subject areas. Programs for every grade level are designed to meet virtual and in-person classroom needs through engaging, hands-on learning. Standards-based lesson materials and the Teacher and Student Resource Portal, loaded with primary sources, make incorporating the rich vibrancy of country music past and present into your classroom easy and fun.

## *Virtual Opportunities Available*

Museum educators and teaching artists bring lessons from the galleries to the digital classroom. For more details, see page 20.

**Free to low-cost. Subsidies available.  
Space is limited. Schedule now!**

## BOOKLET KEY ICONS



Teacher and Student Resource Portal



Virtual Field Trip



Professional Development Workshop



Asynchronous Pre-recorded Video Program

All programming information is available on our website:  
[CountryMusicHallofFame.org/SchoolPrograms](https://CountryMusicHallofFame.org/SchoolPrograms)


02

## ► **Field Trips: Year-Round Offerings**



*Artifact Adventure*

*Dazzling Designs* 

*Words & Music: Teach Language Arts Through Lyric Writing* 

*Songwriting 101: An Introduction to Words & Music* 


*STEAM: Listening Technology over Time*  

*STEAM: Science of Sound at Historic RCA Studio B*  

*Hatch Show Print* 

*Student Performances*

*Homeschool Programs*

*Is It a Fiddle or a Violin?* 

*Professional Development* 

14

## ► **On Stage: Theater Programs**

*String City: Nashville's Tradition of Music and Puppetry*

*Riders in the Sky*

*Bill of Rights: The Remix!*

*All Access*

18

## ► **Outreach Programs: Museum Programs in Your Classroom**

*Words & Music (grades 3–12)*

*Words & Music for Early Learners (pre-K+K)*

*Traveling Trunks*

20

## ► **Online: Virtual Programs and Resources**

*Virtual Field Trips* 

*Teacher and Student Resource Portal*

*Asynchronous Programs* 

24

## ► **2021–2022 Exhibitions**

*Sing Me Back Home: Folk Roots to the Present*

*Limited-Run Exhibitions*

*American Currents: The State of the Music*


*Country Music Hall of Fame Rotunda*



28

## ► **Out-of-School Time**

*Community Counts: Museum Admission Program for Locals*

*Teen Team: A Volunteer Program for Teens*

*Songwriting Tune-Up* 

*Words & Music at Home*  

30

## ► **Plan Ahead: Cost and Scheduling**

*Frequently Asked Questions*

*Arts Access Fund • Pricing*



Elvis Presley's 1960  
Cadillac 75 Limousine

# Artifact Adventure

## MUSEUM GALLERY EXPLORATION

Travel in time from country music's folk roots and the dawn of radio to contemporary country and the age of YouTube and streaming services. In this hands-on tour experience, students work in teams on a quest through the Museum and interact with experts along the way.

*Artifact Adventure* focuses on pivotal moments in United States history as told through the Museum's one-of-a-kind collection. Students learn about music as a cultural expression shaped by immigration, cultural convergence, and innovations in technology, musical instruments, and design.



### 60 MINUTES | K-12

25–120 Students

English Language Arts, Music, SEL,  
Social Studies, STEAM, Visual Art

### SELECT STANDARDS

**Common Core ELA:** CCSS.ELA-LITERACY.  
CCRA.R.7, CCSS.ELA-LITERACY.CCRA.SL.1

**TN Music Foundations:** R1, R2, Cn1, Cn2

**TN Social Studies:** 2.18, 2.31, 4.19, 4.22,  
5.05, 5.22, 5.51, 5.52, AAH.31, CI.20, E.05,  
S.17, TN.50, TN.60

**Social and Emotional Learning Indicators:**  
1B, 2A, 3A, 3B, 3C, 4A, 5B



# Dazzling Designs

## COUNTRY COUTURE-INSPIRED ART-MAKING ACTIVITY

This interactive workshop highlights country designers and instrument makers, including Ukrainian-born Nudie Cohn, who immigrated to the United States when he was eleven. Cohn's eye for design and talents with a sewing machine led him to become the father of country couture, earning him the nickname "Nudie the Rodeo Tailor."

Students will review elements of design and discuss representations of culture, symbolism, and individuality in style. The experience comes together with an art-making activity in which students lend their own point of view to a unique costume or instrument design.



**60 MINUTES | K-4**

15–120 Students

English Language Arts, Music, SEL,  
Social Studies, STEAM, Visual Art

### SELECT STANDARDS

**TN Visual Arts Foundations:** Cr1-3, R1, R2, Cn1, Cn2

**TN Music Foundations:** R1, R2, Cn1, Cn2

**TN Social Studies:** K.02, K.06, 1.04, 1.05, 2.02, 2.04

**Social and Emotional Learning Indicators:**  
1B, 1C, 1D, 2A, 3A, 3C, 4A, 4B, 5B

Right: Kacey Musgraves's outfit from the 2014 Grammys

Below: Detail from Lynn Anderson's outfit from *Starsky & Hutch*, 1977





# Words & Music

## TEACH LANGUAGE ARTS THROUGH LYRIC WRITING

Excite students about reading and writing through this innovative and interdisciplinary program. *Words & Music* allows students to tell their stories by writing original song lyrics that develop language arts skills. Students interact with a professional songwriter, who is paired with their class, for an engaging performance workshop that features student lyrics as finished songs.

Using the award-winning *Words & Music* Teacher's Guide, educators lead their students through a sequential lyric-writing unit. Multimedia resources, including PowerPoints, videos, and primary sources, are available in the Teacher and Student Resource Portal.

***Words & Music* is also available as an outreach program in your school. See page 18.**

**RECOMMENDATION:** Attend *Words & Music* Professional Development before beginning instruction. See page 12.



**60 MINUTES | 3-12**

15-120 Students

English Language Arts, Music,  
SEL, Social Studies

### SELECT STANDARDS

**Common Core ELA:** CCSS.ELA-Literacy.CCRA.R.1, CCSS.ELA-Literacy.CCRA.R.2, CCSS.ELA-Literacy.CCRA.W.4

**Music:** National Association for Music Education Common Anchor Standard 7, 9, 10, 11

**TN Music Foundations:** R1, R2, Cn1, Cn2

**TN Social Studies:** SSP.01, SSP.05, 3.04, 3.10, 5.14, 5.51

**Social and Emotional Learning Indicators:** 1B, 2A, 3A, 4A, 5A

Made possible by the CMA Foundation and the Country Music Association Endowment for *Words & Music*, and other generous supporters.

# AN INTRODUCTION TO WORDS & MUSIC





Boombox

# STEAM: Listening Technology over Time

## FROM THE GRAMOPHONE TO THE IPOD



Transistor Radio

Explore the gamut of music listening technologies—from the record player to the MP3 player—in this collaborative, interactive program. Students are challenged to think critically as they make observations, compare and contrast, and eventually discover how and why these technologies have changed over time. Paired with time in the Museum galleries, this program connects music to the device on which it was played, providing a powerful look at the intersection of art, history, and technology.

***Listening Technology over Time* is also available as an asynchronous program. See page 22.**



### 60 MINUTES | 3-12

15-100 Students

Music, SEL, Social Studies, STEAM

### SELECT STANDARDS

**TN Music Foundations:** Cn2

**TN Social Studies:** SSP.01, SSP.04, SSP.05, 5.14, 5.22, US.31, US.75

**TN Science:** 3.ETS2, 4.ETS2.3, 8.PS4.3

**Social and Emotional Learning Indicators:** 3A, 3C, 4A, 5B



# STEAM: Science of Sound

AT HISTORIC RCA STUDIO B



Historic RCA Studio B, Nashville's oldest operating recording studio, provides a powerful and engaging environment for students to experience the convergence of science, technology, history, and music. In this interactive program, students act as sound engineers to evaluate how reflection and refraction shape the studio space. Students will also learn about the rise of Music Row and hear the songs recorded by artists like Elvis Presley, Dolly Parton, and Charley Pride.

***Science of Sound* is also available as an asynchronous program. See page 22.**

Preservation of Historic RCA Studio B is made possible through a partnership between the Mike Curb Family Foundation and the Country Music Hall of Fame® and Museum.



**60 MINUTES | 2-12**

15-150 Students

Music, SEL, Social Studies, STEAM

## **SELECT STANDARDS**

### **TN Music Foundations:**

R1, R2, Cn1, Cn2

### **TN Social Studies:** 5.22, 5.51,

TN.50, TN.60, TN.63

### **TN Science:** 2.PS4.1,

2.ETS.1.4, 3.ETS2.1, 4.PS4.1,

8.PS4.1, 8.PS4.2

### **Social and Emotional Learning**

**Indicators:** 1B, 1C, 1D, 3A, 3C,

4A, 4B, 5A



Charley Pride recording in the studio.



RCA Studio B, c.1962



# Hatch Show Print Tour



Discover how a letterpress print shop established in 1879 thrives in the digital age. At Hatch Show Print, students learn about the letterpress printing process, from initial sketches to the final pass through the press. They also explore the shop's connection to Southern entertainment and the history of graphic design. The program culminates with students hand-inking and printing a limited-edition poster.



**60 MINUTES | 3-12**

10-50 Students

Math, SEL, Social Studies, STEAM, Visual Arts

**SELECT STANDARDS**

**TN Science:** 3.ETS2

**TN Social Studies:** US.44

**TN Visual Art:** VA.P3.A, VA.R1.A, VA.CN2.A

**Social and Emotional Learning Indicators:** 1D, 3A, 3C, 4A, 5B

# Alpha-Blox

## DESIGN WITH TYPEFACE

Get inky with Hatch Show Print. Using a unique typeset called Alpha-Blox, students manipulate shapes that can be combined to make words, symbols, and patterns. Always paired with a tour of Hatch Show Print, Alpha-Blox allows students to practice each step of the relief printing process, using real tools unique to the trade to make their own custom creation.

**60 MINUTES | 3-12**

10-50 Students

Math, SEL, Social Studies, STEAM, Visual Arts

**SELECT STANDARDS**

**TN Visual Art:** VA.Cr1.A, VA.Cr2.A

**TN Math:** 3.MD.C.6, 4.MD.A.3

**Social and Emotional Learning Indicators:** 3A, 3B, 5A

# Student Performances

Entertain Museum visitors and make your mark on Music City by showcasing your school's choir or ensemble in the Mike Curb Conservatory or on the Museum's outdoor plaza.

**Tour the Museum before or after the performance.**

## CHORAL ARRANGEMENTS

Available in the Teacher and Student Resource Portal.

▶ **"Rocky Top"** by Felice and Boudleaux Bryant

▶ **"Tennessee Waltz"** by Redd Stewart and Pee Wee King

▶ **"Will the Circle Be Unbroken"** by Ada Habershon and Charles Gabriel

[CountryMusicHallofFame.org/Portal](http://CountryMusicHallofFame.org/Portal)



**20 MINUTES | K-12**

10–50 Students (Choir)

10–30 Students (Acoustic Ensemble)

10–50 Students (Band)

## SELECT STANDARDS

**TN Music Foundations:** P3, Cr3

**Social and Emotional Learning**

**Indicators:** 1D, 2A, 3C, 4A, 5B







# Homeschool Programs

Enjoy learning experiences designed with homeschoolers in mind. Homeschool Programs provide smaller groups access to Museum programs that ordinarily require a minimum number of participants.

**Groups of 10+ students can book programs independently from Homeschool Programs.**

## 2021–2022 HOMESCHOOL PROGRAMS

Ages six and up

*Dazzling Designs*

*Hatch Show Print*

*Is it a Fiddle or a Violin?*

*Songwriting 101*

*STEAM: Listening Technology over Time*

*STEAM: Science of Sound at Historic RCA Studio B*

*String City*

## WORDS & MUSIC FOR HOMESCHOOL

Homeschool students can strengthen their creative writing skills by participating in the *Words & Music* songwriting program. Through five weekly classes, students are guided by a Museum educator and songwriter to create their own song lyric. The course culminates with a performance workshop that features a selection of student lyrics set to music by a professional songwriter.

Time and date information for each program is available on our website: [CountryMusicHallofFame.org/Homeschool-Programs/](https://CountryMusicHallofFame.org/Homeschool-Programs/)



# Is It a Fiddle or a Violin?

## PARTNERSHIP PROGRAM WITH THE NASHVILLE SYMPHONY

Learn the fascinating history of this stringed instrument from its Italian origins to its adaptation in the British Isles and arrival in the United States. This one-of-a-kind, toe-tapping program is presented by two professional musicians and features guided tours of both the Country Music Hall of Fame and Museum and the Schermerhorn Symphony Center. *Is It a Fiddle or a Violin?* challenges students to think about the versatility of an instrument and the relationship between the past and the world around them.

Time and date information is available on our website:  
[CountryMusicHallOfFame.org/SchoolPrograms](http://CountryMusicHallOfFame.org/SchoolPrograms)



### 150 MINUTES | K-5

15–120 Students

Music, Performing Arts, SEL, Social Studies

### SELECT STANDARDS

**TN Music Foundations:** R1, R2, Cn1, Cn2

**TN Social Studies:** SSP.01, SSP.05, 1.01, 1.02, 1.03, 2.02

**Social and Emotional Learning Indicators:**  
1D, 2A, 3C, 4B, 5B

Presented in  
partnership with



Nashville  
Symphony



Bottom right:  
Fiddle used by  
John Hartford



# Professional Development

Free professional development workshops for teachers connect the Museum to language arts, social studies, music, science, and visual arts curriculums. Workshops help teachers prepare students for Museum visits and programs, offering creative approaches in teaching core subject areas.

Time and date information for each program is available on our website:  
[CountryMusicHallofFame.org/Professional-Development](http://CountryMusicHallofFame.org/Professional-Development)

## WORDS & MUSIC: TEACH LANGUAGE ARTS THROUGH LYRIC WRITING

Looking for a creative and effective method to strengthen reading and writing skills? *Words & Music* is an engaging and interactive classroom unit that teaches language arts through lyric writing. Taught by Museum staff and a professional songwriter, this workshop allows the teacher to step into the student's shoes by learning the basics of songwriting and how to craft meaningful lyrics. This workshop overviews the award-winning interdisciplinary curriculum, shares how you can use it in your classroom, and provides Social and Emotional Learning teaching tools in the context of lyric writing. The day ends with a performance of songs created during the workshop.



### GRADES 3-12

English Language Arts, Music,  
SEL, Social Studies

## STRING CITY: STORYTELLING THROUGH MUSIC AND PUPPETRY

Join Museum and Nashville Public Library educators to learn how to incorporate *String City: Nashville's Tradition of Music and Puppetry* in project-based learning lesson. Professionals will present ways to use puppetry and music to teach social studies and writing for various grade levels. This interdisciplinary approach to music, history, language arts, and visual and performing arts will get your students excited about attending *String City*, while providing instruction in core standards.



### GRADES K-4

English Language Arts, Music, SEL, Social Studies, Visual Art

Presented in collaboration with



## STEAM

From the galleries and Historic RCA Studio B to Hatch Show Print, STEAM is all around us at the Museum. Experience how the subjects of *science, technology, engineering, art, and mathematics* intersect in our three distinct settings. At Studio B, hear how engineers used the science of sound to shape the tracking room, a favorite recording space for stars like Dolly Parton, Elvis Presley, and Charley Pride. At Hatch Show Print, see printmakers cultivate conservation through the creation of posters, tapping into the art of math to produce distinct, descriptive designs. In the Museum galleries, analyze diverse listening devices that have impacted how music is made, recorded, consumed, and shared over time. The workshop culminates with STEAM activities that teachers can take back to the classroom.



### GRADES 2-12

English Language Arts, SEL, Social Studies, STEAM



Gramophone

## THE TIMES THEY ARE A-CHANGIN': AMERICAN HISTORY WORKSHOP

The country music story presents numerous connections to social studies curriculum, allowing teachers to reach students through an interactive and dynamic approach. Utilizing the Museum as a laboratory, with access to Museum content experts, teachers will acquire new and engaging teaching tools to help their students think critically about industrializing America, The Great Depression, westward migration, the rise of the suburbs, cultural conflict during the 1970s, and more.



### GRADES 4-12

English Language Arts, SEL, Social Studies





# String City

## NASHVILLE'S TRADITION OF MUSIC AND PUPPETRY

*String City* showcases Nashville's rich and entertaining legacy of country music through marionettes, rod puppetry, animation, and more. Starting with the early days of string bands, gospel music, and the birth of the Grand Ole Opry, the audience meets the great icons of country music as the show travels through time, from classic recordings to present-day hits. This original musical revue features over thirty songs, with puppet appearances by DeFord Bailey, Garth Brooks, the Carter Family, Dolly Parton, George Strait, Taylor Swift, Keith Urban, Hank Williams, and many more.

Time and date information for each program is available on our website: [CountryMusicHallofFame.org/SchoolPrograms](http://CountryMusicHallofFame.org/SchoolPrograms)



**75 MINUTES | K-4**

10-180 Students

English Language Arts, Music, SEL, Social Studies, Visual Art

### SELECT STANDARDS

**TN Music Foundations:** P3, Cn2

**Visual Art Foundations:** R1, Cn2

**TN Social Studies:** K.02, 1.01, 1.25, 2.31

**Social and Emotional Learning Indicators:** 1D, 2A, 3C, 4B, 5B

### COMMON CORE CURRICULUM

CCSS.ELA-LITERACY.CCRA.R.7,  
CCSS.ELA-LITERACY.CCRA.SL.2

Presented in  
collaboration with





# Riders in the Sky

## THEATER PROGRAM FEATURING "AMERICA'S FAVORITE COWBOYS"

Round up your students for cowboy culture at its finest and funniest. America's favorite saddle pals preserve Western musical heritage, from campfire stories and slapstick humor to flashy fringe shirts and tight harmony singing. Of the many appearances, awards, and accolades earned in their forty-year career, Riders in the Sky are revered for creating music for *Toy Story 2*, which earned the group a Grammy Award. Come learn and laugh along with guitarist and yodeler Ranger Doug, bassist Too Slim, fiddler and rope trickster Woody Paul, and accordionist "Joey the CowPolka King."

Time and date information available on our website:  
[CountryMusicHallofFame.org/SchoolPrograms](http://CountryMusicHallofFame.org/SchoolPrograms)

### 70 MINUTES | K-4

10-300 Students

Music, Performing Arts, SEL, Social Studies

### SELECT STANDARDS

**TN Social Studies:** 1.25, 2.02, 4.22, 5.02

**TN Music Foundations:** R1, R2, Cn1, Cn2

**Social and Emotional Learning Indicators:**  
1D, 2A, 3C, 4B, 5B

### COMMON CORE CURRICULUM

ELA CCSS.ELA-LITERACY.CCRA.R.7,  
CCSS.ELA-LITERACY.CCRA.SL.2





Bottom Right: Maren Morris, Columbia Nashville  
Recording Artist  
Photo: Andy Barron

Top: Bob Dylan and Johnny Cash on set, June 7, 1969  
From the collection of the family of Al Clayton

# ► Bill of Rights: The Remix!

## A MULTIMEDIA SHOW ABOUT CONSTITUTIONAL AMENDMENTS

Celebrate our most fundamental freedoms through some of America's most powerful songs. *Bill of Rights: The Remix!* tells the entertaining, engaging, and inspiring story of our nation through rock, pop, hip-hop, and country music. Experience a high-energy, multimedia show that illustrates constitutional issues, including freedom of speech and the rights to assemble and to petition the government. James Madison meets Beyoncé with a twist of Johnny Cash—only in Music City. Combine this program with a Museum tour to learn how Nashville and country music takes on a new and deeper meaning in relation to United States history and law.

Time and date information available on our website:  
[CountryMusicHallofFame.org/SchoolPrograms](http://CountryMusicHallofFame.org/SchoolPrograms)

### 90 MINUTES | 6–12

10–300 Students

English Language Arts, Music,  
SEL, Social Studies

### SELECT STANDARDS

**TN Social Studies:** 8.18, 8.68, AAH.18,  
AAH.44, CI.12, S.31, GC.08, GC.24, GC.33,  
US.18, US.81, US.82,Z US.84, US.87

**TN Music Foundations:** R1, R2, Cn1, Cn2

**Social and Emotional Learning Indicators:**  
1D, 2A, 3C, 4B, 5B

### COMMON CORE CURRICULUM

CCSS.ELA-LITERACY.CCRA.R.7,  
CCSS.ELA-LITERACY.CCRA.SL.2

Presented in partnership with  
the Free Speech Center at  
Middle Tennessee State University.



# All Access

## LIVE Q&A CONNECTS STUDENTS AND ARTISTS

Hear personal stories and gain insight directly from recording artists and other professionals in the music business. *All Access* connects students with the creative community and illuminates the history and culture presented in the Museum galleries. This engaging, live question-and-answer session takes students behind the scenes and on the road through the first-hand accounts told by the entertainers themselves. Students are invited to submit questions to be included in the program. *All Access* leaves a lasting memory that inspires students for years to come.

Past *All Access* programs have included interviews with Faith Hill, Reba McEntire, Tim McGraw, Keith Urban, and Trisha Yearwood.

**Artists and dates are announced upon confirmation.**

**75 MINUTES | 6-12**

10-300 Students

College and Career Readiness, Music, SEL

### **SELECT STANDARDS:**

**TN Music Foundations:** R1, R2, Cn1, Cn2

**Social and Emotional Learning Indicators:**  
1D, 2A, 3C, 4B, 5B



Left: Tim McGraw and Faith Hill

Right: Trisha Yearwood (top) and Country Music Hall of Fame member Reba McEntire (bottom)





# Words & Music Outreach

## OUR FLAGSHIP PROGRAM BROUGHT TO YOUR CLASSROOM

The traveling version of our flagship education program, *Words & Music*, is available to visit your classroom. The curriculum culminates with a professional songwriter visiting your school for an engaging performance workshop that features a selection of student lyrics as finished songs.



### 60 MINUTES | 3-12

15-120 Students

English Language Arts, Music,  
SEL, Social Studies

### SELECT STANDARDS

**Common Core ELA:** CCSS.ELA-Literacy.  
CCSS.ELA-Literacy.CCRA.R.1,  
CCSS.ELA-Literacy.CCRA.R.2,  
CCSS.ELA-Literacy.CCRA.W.4

**RECOMMENDATION:** Attend *Words & Music* Professional Development before beginning instruction. See page 21.

### SELECT STANDARDS

**Music:** National Association  
for Music Education Common  
Anchor Standard 7, 9, 10, 11

**TN Music Foundationn:** R1, R2,  
Cn1, Cn2

**Social and Emotional Learning  
Indicators:** 1B, 2A, 3A, 4A, 5A

## WORDS & MUSIC FOR EARLY LEARNERS

*Words & Music* for Early Learners builds early literacy skills and Social and Emotional Learning through music, movement, and lyric writing. The program includes three, pre-recorded video lessons that teach students about the parts of a song and themes. The lessons prepare students for a live program —available at your school or virtually —where they will contribute ideas and write a song with a songwriter about one of three themes: animals, food, or things that go.



### 30 MINUTES | Pre-K+K

10-20 Students

English Language Arts, Music, SEL

### SELECT STANDARDS

**Early Literacy:** PK-K.W.TTP.1, PK-K.  
FL.PC.1, PK-K.SL.CC.1, PK-K.PK1.4

**Music:** PK.CA.4, K.6M.P3

**Social and Emotional Learning Indicators:**  
PK.SPC.RS.3; K:1B, 4A, 4B,5B



# ▶ Traveling Trunks

## HANDS-ON LEARNING IN YOUR CLASSROOM

Free *Traveling Trunks* bring the sounds of country music into your classroom. For two weeks, your students can feel, hold, play, and hear the timeless tools of musicians. Each kit features real instruments and accessories meant to connect your students with music in an engaging, hands-on way.

The *Acoustic Instrument Trunk* familiarizes students with traditional instruments central to country music: banjo, fiddle, guitar, and mandolin.

The *Electric Instrument Trunk* lets students turn it up with an electric guitar, lap steel guitar, and amplifier, as well as a harmonica set, fiddle, and acoustic guitar.

The *Listening Devices Trunk* invites students to experience the evolution of sound technology with a record player, transistor radio, 8-track player, boombox, Walkman, CD player, and MP3 player. Music in the form of records, 8-tracks, cassette tapes, and CDs are also included.



### GRADES 2–12

Music, SEL, Social Studies, STEAM

### SELECT STANDARDS

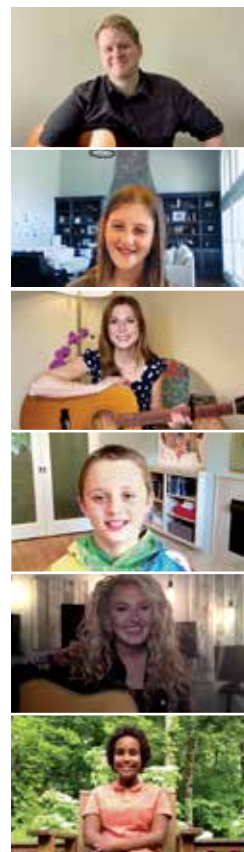
**TN Social Studies:** SP.01, SSP.05, 1.01, 1.02, 1.03, 2.02, 2.03, 3.17

**TN Science:** 2.PS4.1, 2.ETS1.1, 3.ETS2.1, 4.ETS2.3

**TN Music Foundations:** R1, R2, Cn1, Cn2

**Social and Emotional Learning Indicators:** 1B, 1C, 1D, 2A, 3A, 3B, 3C, 4A





# ▶ Virtual Field Trips

Live, synchronous programs transport the Museum experience beyond the building. Led by Museum educators and artists, these programs bring our interactive lessons directly into your physical or virtual classroom.

## PROGRAM OPTIONS

*Dazzling Designs*

*Guided Highlights Tour*

*Is It a Fiddle or a Violin?*

*Professional Development*

*Songwriting 101: An Introduction to Words & Music*

*STEAM: Listening Technology over Time*

*STEAM: Science of Sound at Historic RCA Studio B*

*Words & Music: Teach Language Arts Through Lyric Writing*



**60-90 MINUTES**

## DO YOU USE GOOGLE EXPEDITIONS?

Find us at "Country Music Hall of Fame and Museum."

## PRICING BEGINS AT \$125

The Museum's Arts Access Fund provides subsidies. Details given on page 31.

Questions? Email us at [Schools@CountryMusicHallOfFame.org](mailto:Schools@CountryMusicHallOfFame.org)

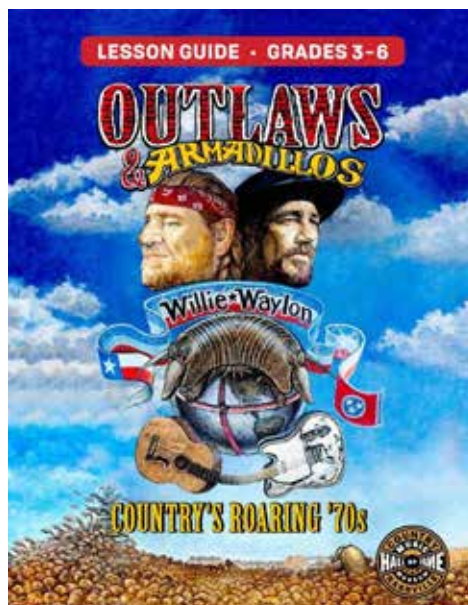
# Digital Resources

## LESSON MATERIALS



Museum-focused teacher guides and lesson materials provide an interdisciplinary way of teaching core subjects by interpreting historic events through stories, music, and culture. Teachers' guides can be used to prepare for a visit or as a creative way to teach standard-based curriculum, independent of a field trip. Resources provide project-based learning lessons and opportunities for team teaching. Materials support national and Tennessee Academic Standards.

Access at [CountryMusicHallofFame.org/Portal](http://CountryMusicHallofFame.org/Portal)



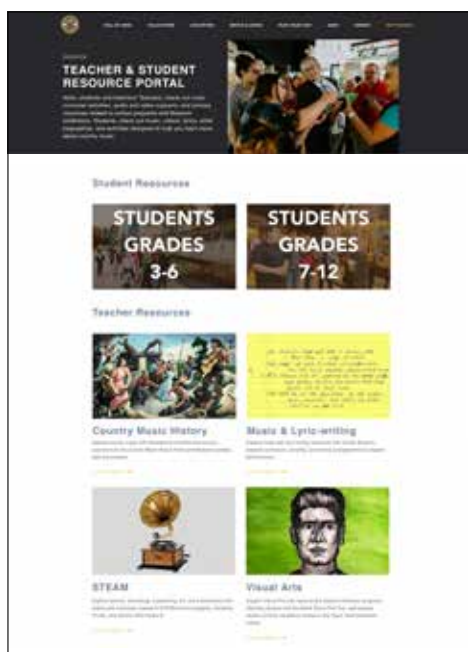
## TEACHER AND STUDENT RESOURCE PORTAL

This educational website provides classroom-ready multimedia tools and lessons for K–12 instruction. Portal materials are designed to support a variety of subject areas, including English language arts, music, social studies, and visual art.

### Resources available:

- Customizable Lesson Materials
- Student Worksheets
- Classroom-Ready PowerPoint Presentations
- Short Videos
- Archival Photos
- Grade-Level Reading Materials
- Primary Sources

Learn more at: [CountryMusicHallofFame.org/Portal](http://CountryMusicHallofFame.org/Portal)



# Asynchronous Programs

Need to meet the needs of your virtual learners? Select programs are offered as an *asynchronous video experience* for students to engage with on their schedule. Teachers have immediate access to video content and accompanying lesson materials at no cost with registration.

## STEAM: LISTENING TECHNOLOGY OVER TIME

Explore *Listening Technology over Time*, a 30-minute video comprised of two video parts: Part 1: 1900s-1970s (17 minutes) and Part II: 1980s-2010s (13 minutes).



### 30 MINUTES | 3-8

15-100 Students

English Language Arts, Music,  
Social Studies

### SELECT STANDARDS

**TN Music Foundations:** Cn2, R1, R1, R1

**TN Social Studies:** SSP.01, SSP.04, SSP.05,  
5.14, 5.22, US.31, US.75

**TN Science:** 3.ETS2, 4.ETS2.3, 8.PS4.3



8-Track Player

## STEAM: SCIENCE OF SOUND AT HISTORIC RCA STUDIO B

Experience *Science of Sound at Historic RCA Studio B*, a four-part, 30-minute video about the history and staff of Studio B, as well as the science behind recorded sound, past and present.

1. History of Studio B: What is RCA Studio B and why is it important?
2. Studio Staff: Who worked at Studio B?
3. Science of Sound: What is sound, and how can it be manipulated?
4. Editing Elvis: Recording then and now



### 30 MINUTES | 5-12

15-100 Students

Music, SEL, STEAM  
Social Studies

### SELECT STANDARDS

**TN Music Foundations:** Cn2, R1, R1, R1

**TN Social Studies:** SSP.01, SSP.04, SSP.05,  
5.14, 5.22, US.31, US.75

**TN Science:** 3.ETS2, 4.ETS2.3, 8.PS4.3





## ARTIFACT BYTES

Experience a *byte* of country music history in two minutes or less! These videos explore the lives of country music artists and Museum artifacts. Composed largely of primary source multimedia from the Museum archives, Artifact Bytes are free and accessible through online registration.

### Video Topics Include:

- Instruments and where they came from
- Gramophone
- DeFord Bailey
- Minnie Pearl and the Grand Ole Opry
- Elvis Presley
- Dolly Parton
- “Rocky Top”
- Country Music Hall of Fame



### GRADES 2-8

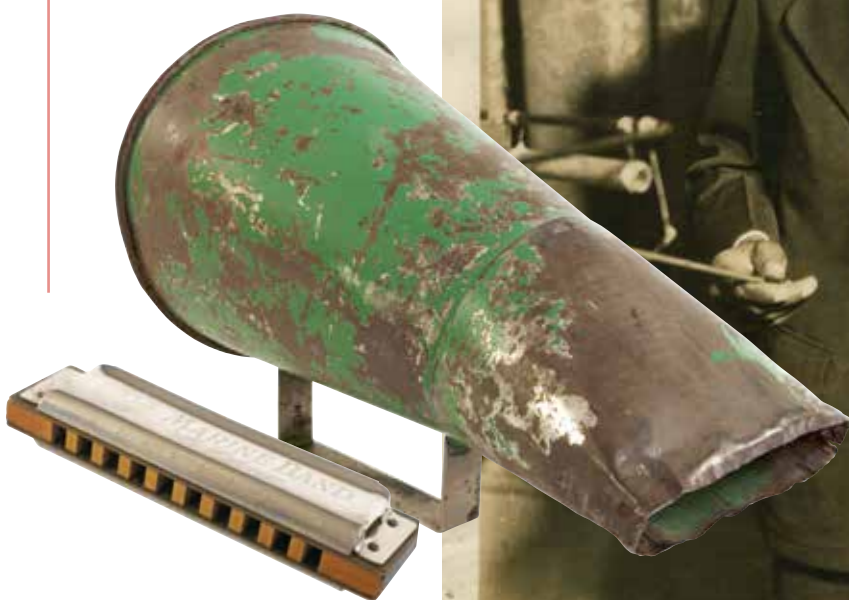
Music, Social Studies, STEAM

### SELECT STANDARDS

**TN Music Foundations:** R1, R2, Cn1, Cn2

**TN Social Studies:** SSP.01, 3.31, 5.05, 5.51, 5.52

**TN Science:** 3.ETS2.1, 4.ETS2.3



Harmonica and megaphone  
used by DeFord Bailey





# Sing Me Back Home

## FOLK ROOTS TO THE PRESENT

The Museum's core exhibit tells the story of country music from its roots in the nineteenth century through its vibrant life today. This exciting, multi-layered experience includes artifacts, photographs, original recordings, and archival video. Students are immersed in the history, culture, sights, and sounds of country music, its meanings, and the lives and voices of its honored creators.



# Limited-Run Exhibits

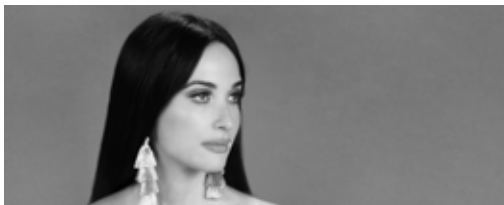
ADDITIONAL EXHIBITS TO BE ANNOUNCED



**AMERICAN CURRENTS:**  
THE STATE OF THE MUSIC



**MARTINA McBRIDE:**  
THE POWER OF HER VOICE



**KACEY MUSGRAVES:**  
ALL OF THE COLORS



**STATION INN:**  
BLUEGRASS BEACON



**OUTLAWS & ARMADILLOS:**  
COUNTRY'S ROARING '70s





Miranda Lambert's outfit from the 2020 ACM Awards  
*Photo: Bob Delevante*

# American Currents

## THE STATE OF THE MUSIC

Enjoy the latest chapter in country music's ever-evolving story through displays such as "Unbroken Circle," recognizing current artists and their musical influences; recent award winners; and major musical events. Jimmie Allen, Gabby Barrett, Dan & Shay, Luke Combs, and Mickey Guyton are among the artists featured in this contemporary gallery.

# Dinah & Fred Gretsch Family Gallery

Record a song; design an album cover; take a career aptitude quiz; and challenge your country music knowledge in this interactive exhibition. Technology-enhanced games and activities bring students inside the music, providing them with a personalized and engaging experience.

# Hall of Fame Rotunda

At the close of the journey, students pause and reflect in the Country Music Hall of Fame Rotunda, the hallowed space where Hall of Fame members are honored alongside Thomas Hart Benton's famous last painting, *The Sources of Country Music*. The American regionalist painter shared his vision for the painting with Country Music Hall of Fame member Tex Ritter: "No one should be recognizable. It should show the roots of the music—the sources—before there were records and stars." Benton's mural provides a visual summary of the story shared in the galleries. It reminds students about the significant musical contributions of those honored in the Hall of Fame and the evolving nature of music and the world around them.





# Teen Team



## A VOLUNTEER PROGRAM FOR TEENS

Do you know a teen who is looking to gain work experience or is interested in a career in a museum or arts organization? *Teen Team* is a youth volunteer program for teens ages 13–18. Created in partnership with high school students to be fun and flexible, *Teen Team* introduces youth to a unique work environment and fosters a passion for music, museums, popular culture, and history.

### TEEN TEAM OFFERS:

- ▶ Real-world work experience in one of the most-visited museums in the United States
- ▶ Information about museum career options and music in Nashville
- ▶ Interactions with visitors from around the world
- ▶ School credit for community service
- ▶ Invitations to special recognition and teen social events

For more information, visit: [CountryMusicHallofFame.org/TeenTeam](http://CountryMusicHallofFame.org/TeenTeam)

# Community Counts

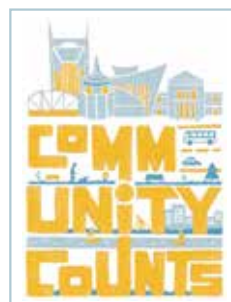
## A MUSEUM ADMISSION PROGRAM FOR LOCALS

Free admission for 18-and-under from Davidson and immediate surrounding counties with proof of residence or school ID.

### COMMUNITY COUNTS PASSPORT

Free admission for up to two adults is available for check out at any Nashville Public Library location.

A partnership of the Country Music Hall of Fame® and Museum and Nashville Public Library





# Songwriting Tune-Up

## SONGWRITING MENTORING FOR YOUTH

*Songwriting Tune-Up* offers budding songwriters ages 11–18 the opportunity to build on the skills gained in other Museum songwriting programs. Through one-on-one mentoring sessions with a songwriting professional, *Tune-Up* encourages young writers to continue to hone their craft and to build confidence to take their songwriting to the next level.



Students must meet eligibility requirements and register in advance.

For more information, visit: [CountryMusicHallofFame.org/TuneUp](https://CountryMusicHallofFame.org/TuneUp)

# Words & Music at Home



## VIRTUAL SONGWRITING RESOURCES

Created for songwriters at all levels, *Words & Music at Home* encourages writers to begin or continue their personal songwriting journey. Aspiring writers can learn at their own pace using a free step-by-step guide to writing lyrics and videos featuring professional songwriters who offer tips and insights on the songwriting process. A GarageBand tutorial provides music composition support, so lyrics can be set to music. Everyone can be a songwriter—even at home!

For resources and materials, visit [CountryMusicHallofFame.org/Education/Words-Music-at-Home](https://CountryMusicHallofFame.org/Education/Words-Music-at-Home)





# Frequently Asked Questions

## WHEN DO YOU SCHEDULE SCHOOL GROUPS?

Monday through Friday

## WHEN DO I NEED TO MAKE A RESERVATION?

Early. The schedule books up quickly, especially later in the school year. Reservations must be made by a teacher or school representative at least one month in advance; six weeks in advance for *Words & Music*.

## WHAT IS THE GROUP MINIMUM OR MAXIMUM?

Program minimums and maximums vary. Please see details on each program page in this booklet.

## HOW LONG DO PROGRAMS LAST?

Programs range in length from sixty to seventy-five minutes. Please see details on each program page in this booklet.

## WHAT ARE THE CHAPERONE REQUIREMENTS?

One adult chaperone per every ten students is required. Two adult chaperones per every ten students are admitted free of charge for all school programs. Chaperones must remain with the group at all times and help maintain orderly student behavior.

Learn more at:  
[CountryMusicHallofFame.org/Field-Trips](https://CountryMusicHallofFame.org/Field-Trips)

# ▶ Arts Access Fund

The Museum's Arts Access Fund subsidizes Museum admission costs, program fees, and transportation expenses for K–12 schools with demonstrated need. Subsidies are available on a first-come, first-served basis with priority given to Tennessee Title I schools.

Details and application information available at: [CountryMusicHallofFame.org/Arts-Access](http://CountryMusicHallofFame.org/Arts-Access)

## ▶ Pricing

### ▶ TENNESSEE SCHOOLS

Davidson County	FREE
Title 1	\$5.00
Non-Title 1	\$7.00
College	\$11.00

### ▶ OUTSIDE TENNESSEE

Title 1	\$9.00
Non-Title 1	\$15.50
College	\$15.50

**Distance Learning:** Programs begin at \$125.

**Dazzling Designs:** All schools are charged a \$1 material fee per student.

**On Stage:** *Riders in the Sky*, *Bill of Rights: The Remix!*, and *All Access* are \$3 per student, regardless of where you fall on the pricing schedule above. *String City* is free. *Is It a Fiddle or a Violin?* follows regular pricing schedule above.

**Chaperones:** Two chaperones per every ten students are admitted free. Each Homeschool Program costs \$15 per family for non-museum members and \$10 per family for family-level museum members. Additional chaperones are \$27.95 if purchasing an individual ticket on the day of the visit; \$21.50 if included in the original school group order or purchased ahead of the visit using their school-specific link.

All school group visits must be booked by a teacher. Professional tour operators may schedule through the Museum's Group Sales department. Payment is required within two weeks of booking. Failure to pay in a timely fashion will result in forfeiture of program reservation.

**Prices and programs are subject to change.**



# BOOK YOUR PROGRAM TODAY.

Schools@CountryMusicHallOfFame.org  
Book at CountryMusicHallOfFame.org/SchoolPrograms



222 Rep. John Lewis Way S • Nashville, TN 37203 • 615.416.2001

CountryMusicHallOfFame.org

SCHOOL PROGRAM FUNDERS



These Museum programs are funded in part by ACM Lifting Lives; Chet Atkins Music Education Fund; Robert K. and Anne H. Zelle Fund for Fine and Performing Arts; Robert K. and Anne H. Zelle Fund for Education of The Community Foundation of Middle Tennessee; CMA; CMA Foundation; Dollar General Literacy Foundation; HCA Foundation; Jackson National Life Insurance Company; Judy and Steve Turner; The Memorial Foundation; Metropolitan Nashville Arts Commission; Mike Curb Family Foundation; PNC Grow Up Great; Tennessee Arts Commission; T&T Family Foundation; and Wells Fargo.

String City: Nashville's Tradition of Music and Puppetry is a collaboration/coproduction between/by Nashville Public Library and the Country Music Hall of Fame and Museum. String City was created and is presented by Nashville Public Library's Wishing Chair Productions in collaboration with the Country Music Hall of Fame® and Museum and was made possible in part by a special gift from Judy and Steve Turner to the Nashville Public Library Foundation.



STOPS  
YOUR  
SAVE